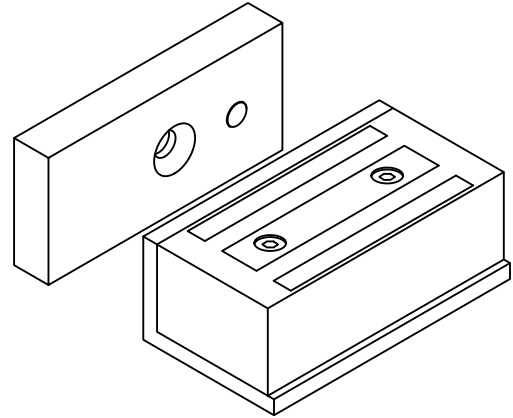
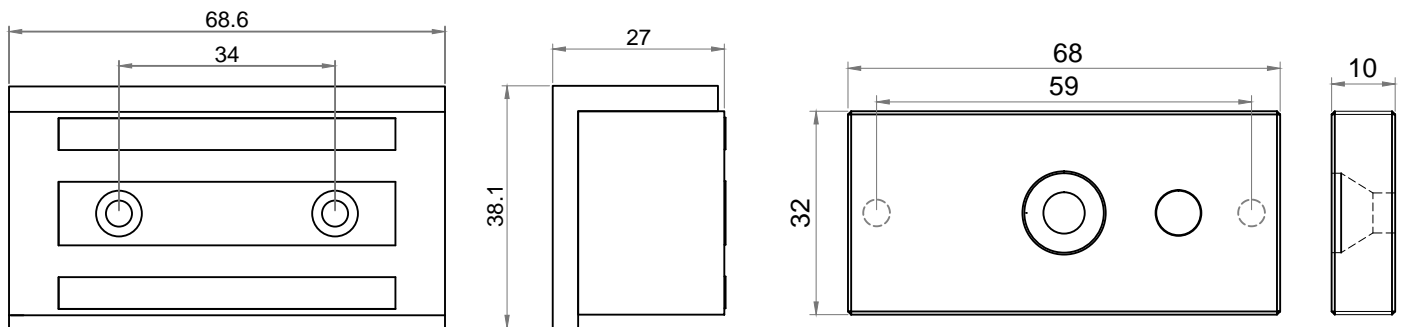


Electromagnetic Lock Installation Instruction Guide (Cabinet Model)

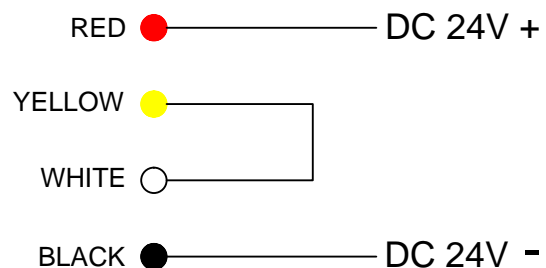
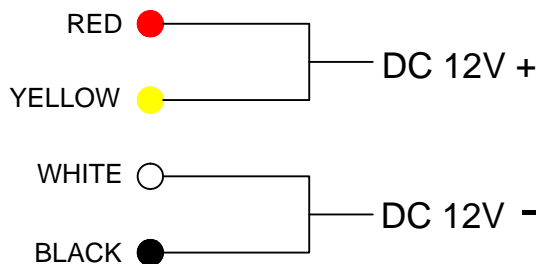
Model	140-S
Spec	
Holding Force	Up to 140lbs (64 kg)
Voltage Input	12VDC / 24VDC
Current Draw	200mA / 100mA
Dimension	(L)69 x (W)38 x (T)27 (mm)



PRODUCT DIMENSION (unit : mm)



WIRING INSTRUCTION



IMPORTANT NOTICE:

Before the power supply is switched on, set the wiring correctly.

Caution :

1. Do not over tighten the screw of armature plate when fixed because proper elasticity should be guaranteed for the rubber washer so the armature plate should be adjust itself to the appropriate position.
2. It is recommended that to apply a light coat of silicon lubricant to the mating surface on a monthly basis to prevent rust.
3. Connect the power wires accordance with NFPA 101 & all wiring to be completed inside protect area.

Basic Installation Concept & Accessories

